

FFCC5B***BLK FOLDING REAR CARGO SEAT

Club Car DS 1982- 2005 Model



BUGGIES
UNLIMITED

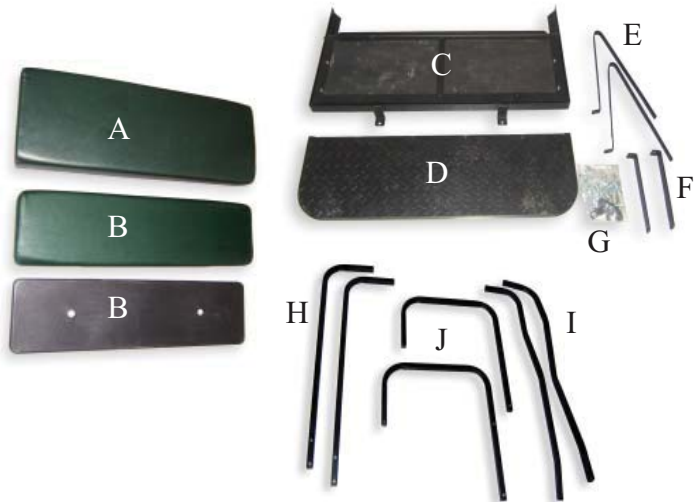
Thank you for purchasing our exclusive **Buggies Unlimited** Folding Rear Cargo Seat Kit. We take great pride in our products and feel certain that this package will offer you many years of trouble-free service. We ask that you take a moment to read these instructions completely before beginning your installation. Familiarity with the parts and an understanding of the installation procedures will ensure that your installation goes smoothly and safely. Additionally, it will give you an opportunity to determine if your cart might have any damaged, corroded, or missing parts which will need replacing prior to using your new Flip-Flop Seat kit.

About This Folding Rear Seat Kit

This Folding Rear Cargo Seat kit is designed specifically for Club Car DS , gas or electric powered golf carts. If you are unsure of your golf cart type, please see our catalog or contact our technical department, toll free a 1-888-444-9994, or online at www.buggiesunlimited.com. During the installation of this kit you will be replacing the seat back supports, rear top supports and removing the rear bumper from your golf cart and replacing them with components in our Folding Rear Seat Kit. You should allow about 2 hours for installation.

Parts Included In Our Kit

Item	Qty	Description
A	1	Seat Base Cushion
B	1	Seat Back Cushion & Cover
C	1	Folding Deck Assembly
D	1	Foot Rest Assembly
E	2	Seat Back Support Bracket
F	2	Deck Support Bracket
G	1	Hardware, Pull Strap & 2 Rubber Pads
H	2	RH & LH Rear Top Supports Up To 2001 1/2
I	2	RH & LH Rear Top Support 2001 1/2 & Up
J	2	Rear Hand Rails



Tools And Materials Required To Install Kit

- 1) SAE socket set, with ratchet and 6" extension.
- 2) SAE combination wrench set.
- 3) #3 Phillips screwdriver and a flat tipped screwdriver.
- 4) Drill and 3/32" drill bit.
- 5) Safety goggles/glasses



DISASSEMBLY



CAUTION: During this installation it is necessary for your personal protection that you wear safety glasses at all times. Remove the key from the cart, turn the tow switch to the tow position (if applicable) and disconnect the negative battery cable, to insure that it does not move accidentally during the installation of this kit.

Buggies Unlimited
1-888-444-9994
www.buggiesunlimited.com

© Copyright 1997-2008 Buggies Unlimited. All Rights Reserved.

- 1) If your cart is NOT equipped with a top, proceed to step #2.
 - Remove the upper rear and upper front top support bolts from the top on your cart. Lift the top off and set it aside.
 - Remove the rear top supports from the bag rack. See Fig 1.
- 2) Remove the seat bottom by lifting it up off its hinges and set it aside.
- 3) Remove the black plastic rear access panel under the sweater basket by first removing the two Phillips screws, then pull the access panel out from the rear body.
- 4) Remove the two screws securing each side of the seat back to the bag rack assembly.

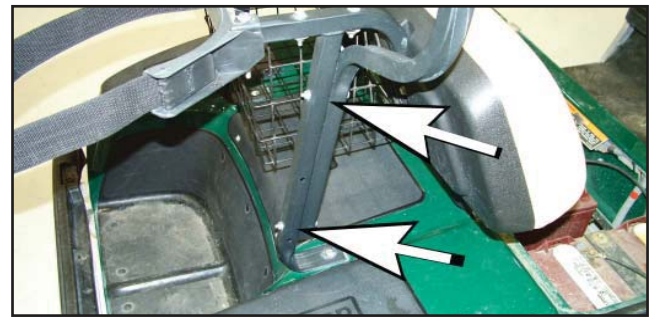


Fig. 1 - Remove Rear Top Support (2001 1/2 & Newer Shown Above)

NOTE: If you are working with a cart that has separate seat back cushions (pre-2001 1/2), you will need to remove the square seat cushion mounts and reuse them during assembly.

- 5) Remove the seat back/bag rack & back rest support assembly using a 1/2" socket & ratchet. See Fig. 2.
- 6) Remove rear bumper from the chassis using a #3 Phillips screwdriver and 1/2" socket & ratchet. See Fig. 3



Fig. 2 - Remove Seat Back Support

SEAT/DECK INSTALLATION

- 1) Install the Foot Rest Assembly onto the frame where the rear bumper was originally mounted. The Deck Support Brackets will set on top of the two outside frame tabs, then the footrest will set on top of them. See Fig. 4. You will need the following hardware:

2	5/16 X 3 1/2" Bolts
2	3/8 X 2 1/4" Bolts
2	1 3/4" Spacers
4	5/16" Flat Washers
4	3/8" Flat Washers
2	5/16" Nylon Lock Nuts
2	3/8" Nylon Lock Nuts

See fig. 5 for spacer installation. ONLY finger tighten all hardware at this time.

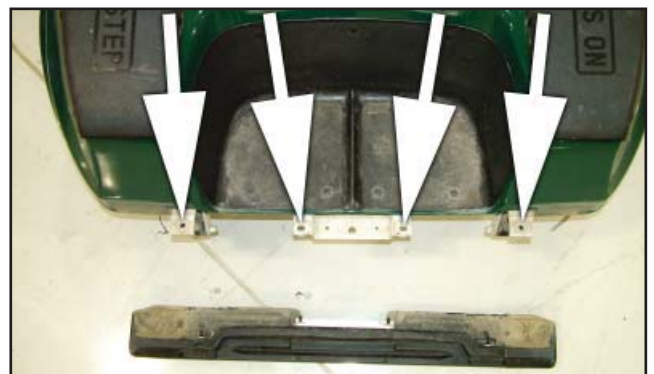


Fig. 3 - Remove Bumper

- 2) Place the Folding Deck Assembly (in the closed or folded position) onto the rear of the vehicle, with the mounting tabs to the front. Place one rubber pad under each mounting tab, to protect the rear body on your cart. Use the following hardware to secure the deck to the two rear Deck Support Brackets. ONLY finger tighten hardware at this time. See Fig. 6 & 7.



Fig. 4 - Install Rear Foot Rest Assembly

2	Rubber Pad
2	3/8" X 1" Bolts
4	3/8" Flat Washers
2	3/8" Nylon Lock Nuts

- 3) Install the new seat back supports using the original 4 bolts and washers through the front mounting holes on each bracket. ONLY finger tighten the 4 bolts at this time.



Fig. 5 - Bumper Spacers

- 4) Place the rear of the Seat Back Support Brackets, on top of the front Deck Assembly tabs. Be sure the rubber pad is between the Deck Assembly tab and the body of the cart. Secure using the following hardware:

2	3/8" X 1 1/2" Bolts
4	3/8" Flat Washers
2	3/8" Nylon Lock Nuts

See Fig. 8. ONLY finger tighten all hardware at this time.

- 5) Install the Rear Hand Rails to the Rear Deck Assembly and Foot Rest Assembly, using the following hardware:

4	5/16 X 1 1/2" Bolts
2	5/16 X 2 1/2" Bolts
12	5/16" Flat Washers
6	5/16" Nylon Lock Nuts

The upper 2 bolts on each side of the hand rails must be installed so that the nut will be on the outside, not in against the deck. The bolts through the Foot Rest Assembly must be inserted from the outside, with the nuts under the Foot Rest. See Fig. 9.

- 6) Install the Seat Base onto the Folding Deck using the following hardware:

6	# 12 X 1 1/4" Wood Screws
---	---------------------------

With the Seat Base Cushion centered in place and resting against the lip at the rear of the folding section of Folding Deck Assembly, you will use a 3/32" drill to add 6 mounting holes through the bottom of the seat cushion. Use the existing holes through the Folding Deck Assembly as a guide for drilling.

- Lift the folding portion of the deck upright so that you can hold the seat cushion in place and drill through the underside of the deck.
- Drill the first hole in the center/top of the seat and install one screw. Be sure to add the pull strap between the seat base and the deck before inserting the screw so the screw will pass through the ring eyelet in the strap. See fig. 10.
- Drill the lower/center hole and install the screw. See fig. 11.
- Drill one outside/top corner and install the screw.
- Drill one outside/lower corner and install the screw.
- Drill the opposite outside/top corner and install the screw.
- Drill the opposite outside/lower corner and install the screw. DO NOT OVER TIGHTEN THE WOOD SCREWS.

- 7) Install the original front seat backrest, onto the new backrest support brackets. See figure 12.

NOTE: If you are installing this kit on a 1995 through 2001 1/2 Club Car, the individual seat back square brackets will be installed first, then the individual seat backs installed onto these brackets. If you are installing on a 1994 or older Club Car, you may have to drill an additional mount hole through each bracket and add an additional bolt to prevent the seat back brackets from rotating.

- 8) Now its time to go back and tighten the hardware which has been left finger tight in previous steps. Tighten the hardware securing the seat back support brackets, rear folding deck and deck support brackets. Also recheck that all the hardware is secure on the Rear Foot Rest Assembly and Hand Rails.

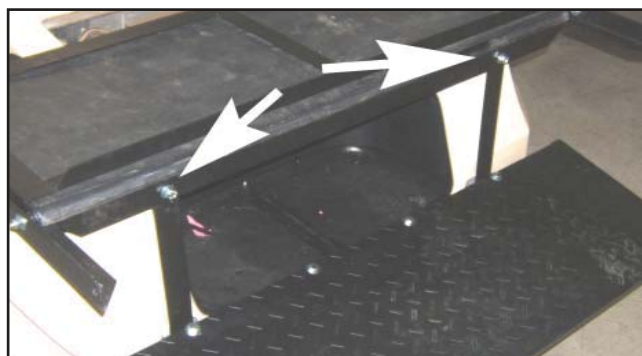


Fig. 6 - Deck To Rear Supports



Fig. 7 - Rubber Pad Installation



Fig. 8 - Seat Back Support onto Deck Mount Tab

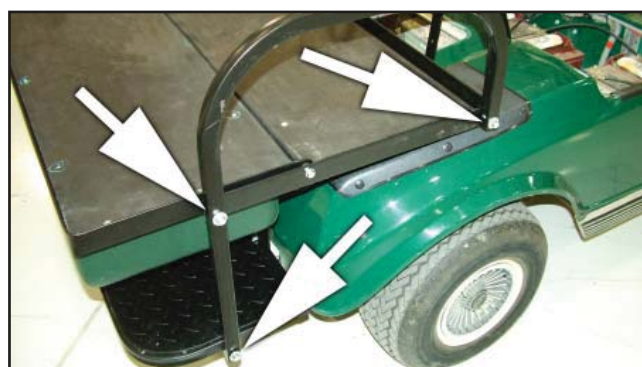


Fig. 9 - Hand Rail Installation

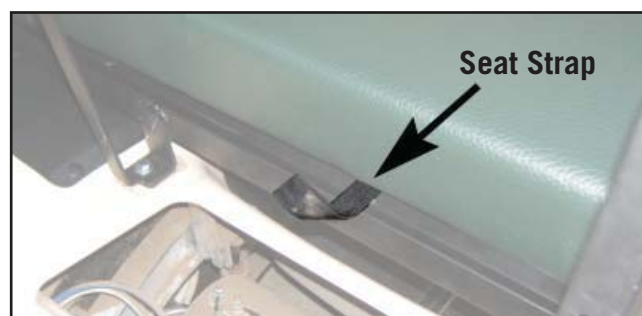


Fig. 10 - Front/Center Screw & Strap Location

9) Install the original access cover using the original hardware.

10) Install the Seat Back Cushion & Cover. See fig. 13. Use the following hardware:

2	1/4 X 20 X 1" Bolts
2	1/4" Flat Washers

11) Install the left and right rear top supports to the hand rails on each side. See Fig. 14.

NOTE: Check the materials list on page 1 to identify the correct top supports for use on your cart.

Use the following hardware:

4	5/16 X 2 1/2" Bolts
8	5/16" Flat Washers
4	5/16" Nylon Lock Nuts

ONLY finger tighten all hardware at this time.

12) Install the top in the reverse order as was disassembled in step 1 using the original hardware. Tighten all top hardware at this time.

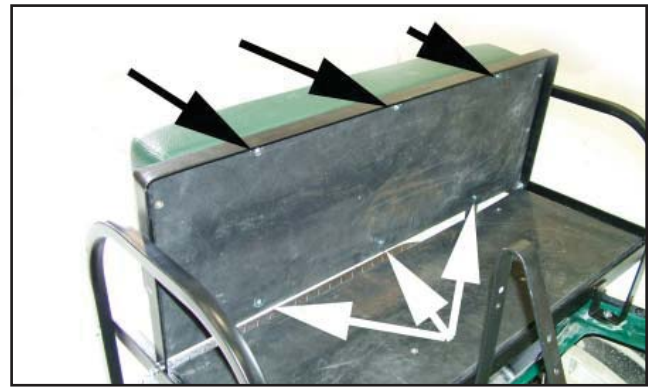


Fig. 11 - Install Seat Base Screws



Fig. 12 - Install Seat Backrest



Fig. 13 - Install Seat back Cushion & Cover



Fig. 14 - Install Top Supports

INDEMNIFICATION AND INSURANCE AGREEMENT

The Folding Rear Cargo Seat purchaser assumes sole and entire responsibility for, and shall indemnify and save harmless Mattison Avenue Corporation (d.b.a. Buggies Unlimited), from any and all claim, liability, responsibility, and damage, or any costs or expenses resulting from any loss of life or injuries or claimed injuries to persons or property that may be sustained in connection with the use of any product before or after purchase, including but not limited to Folding Rear Cargo Seat. The Folding Rear Cargo Seat purchaser also shall indemnify Mattison Avenue Corporation (d.b.a. Buggies Unlimited) and save Mattison Avenue Corporation (d.b.a. Buggies Unlimited) harmless with respect to any and all liability that may be incurred.

Golf carts are recommended for use only by those aged 16 and older. Golf carts can be especially hazardous to operate. Always remember that riding and alcohol/drugs don't mix. Never ride on public roads. Never carry more than 4 passengers (except shuttles and trams). Never engage in stunt driving. Avoid excessive speeds and be particularly careful on difficult terrain. Buggies Unlimited reserves the right, at any time, to discontinue or change specifications, prices, designs, features, models or equipment without notice and without incurring any obligation.

Buggies Unlimited
1-888-444-9994
www.buggiesunlimited.com

© Copyright 1997-2008 Buggies Unlimited. All Rights Reserved.